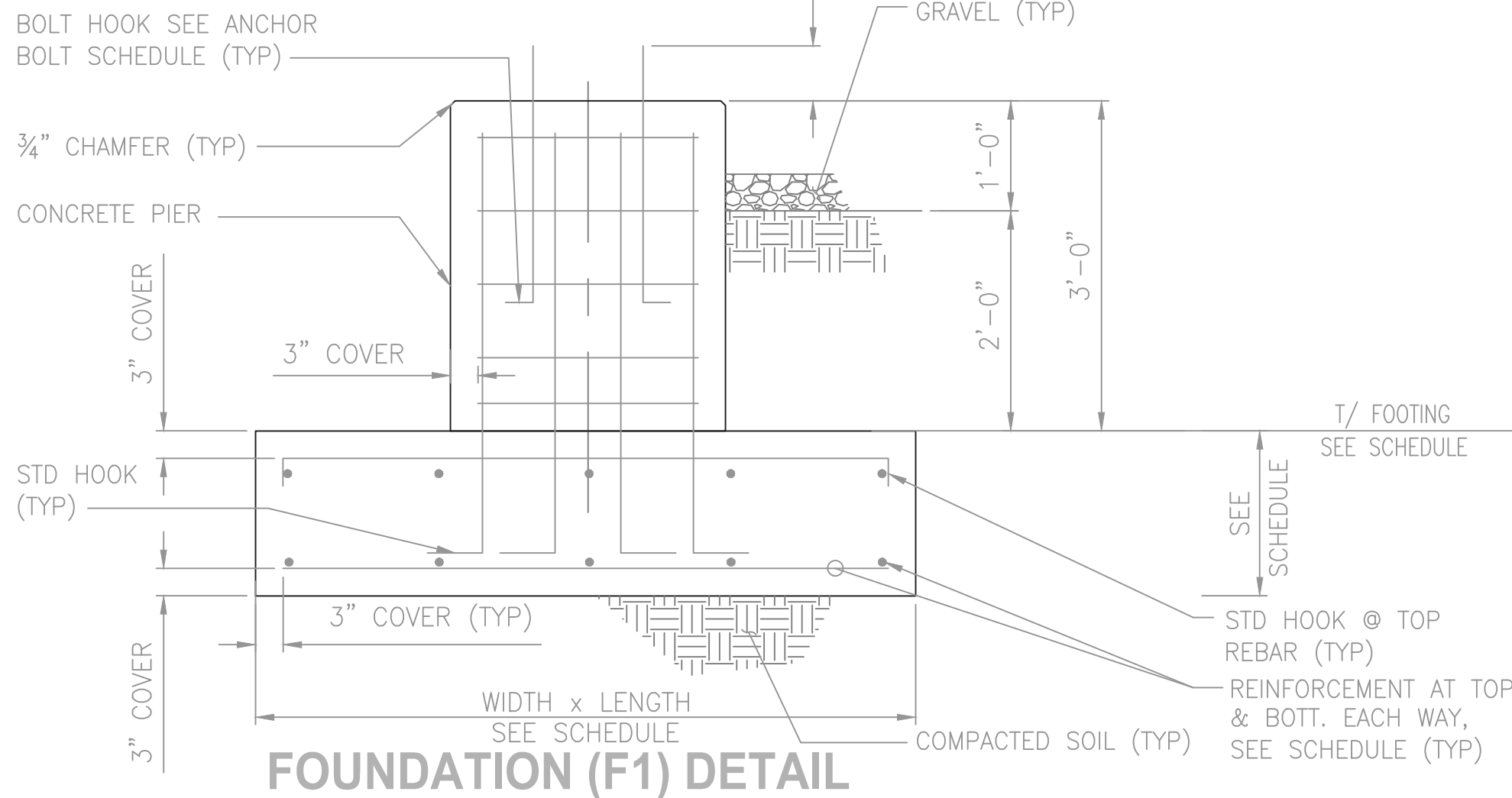
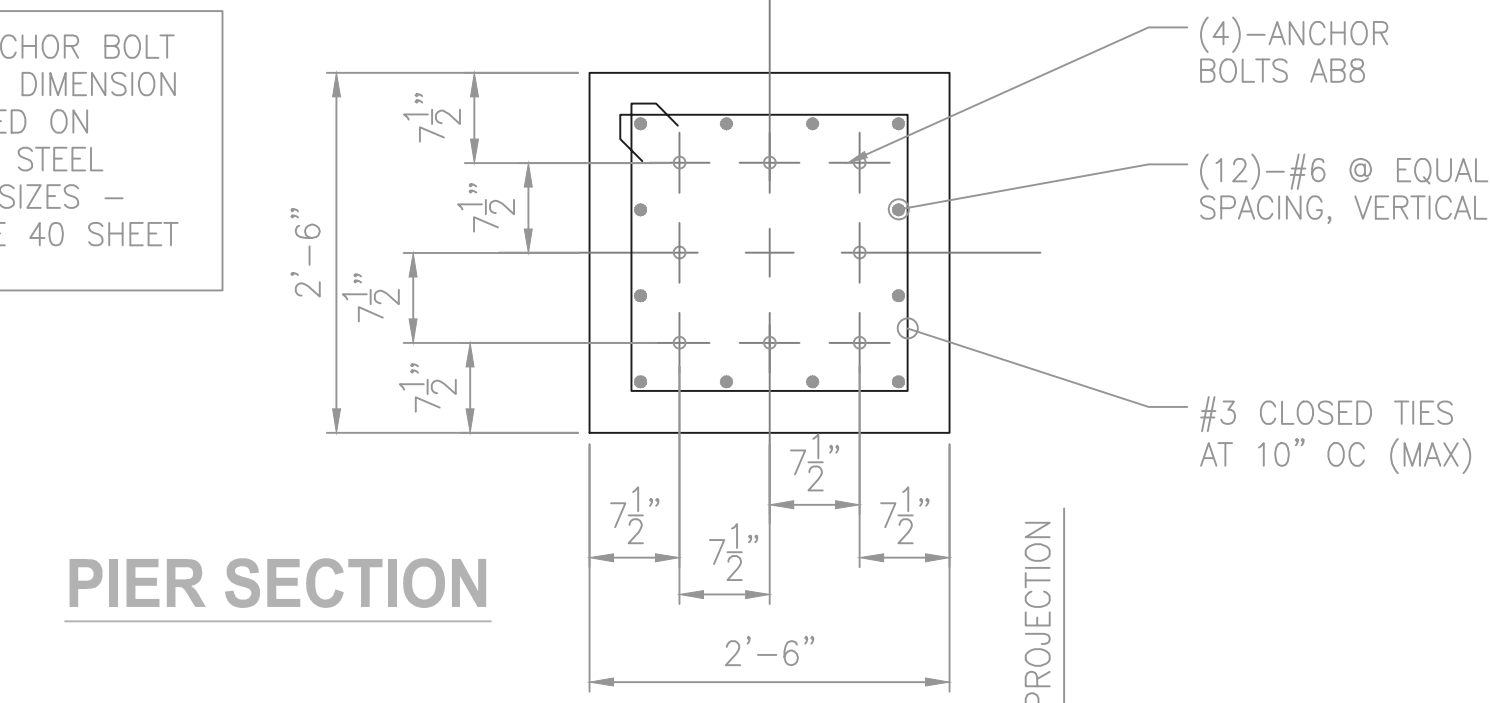


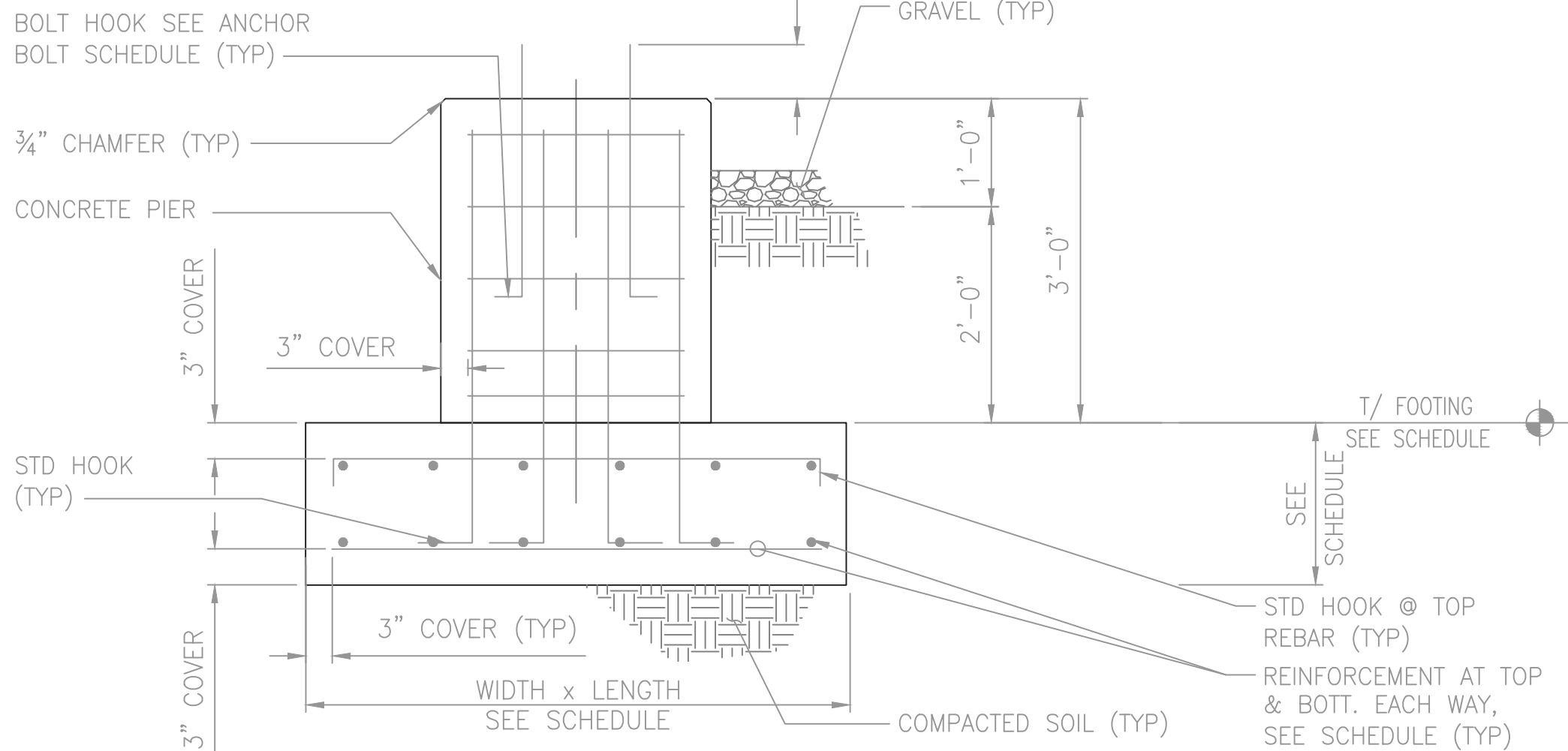
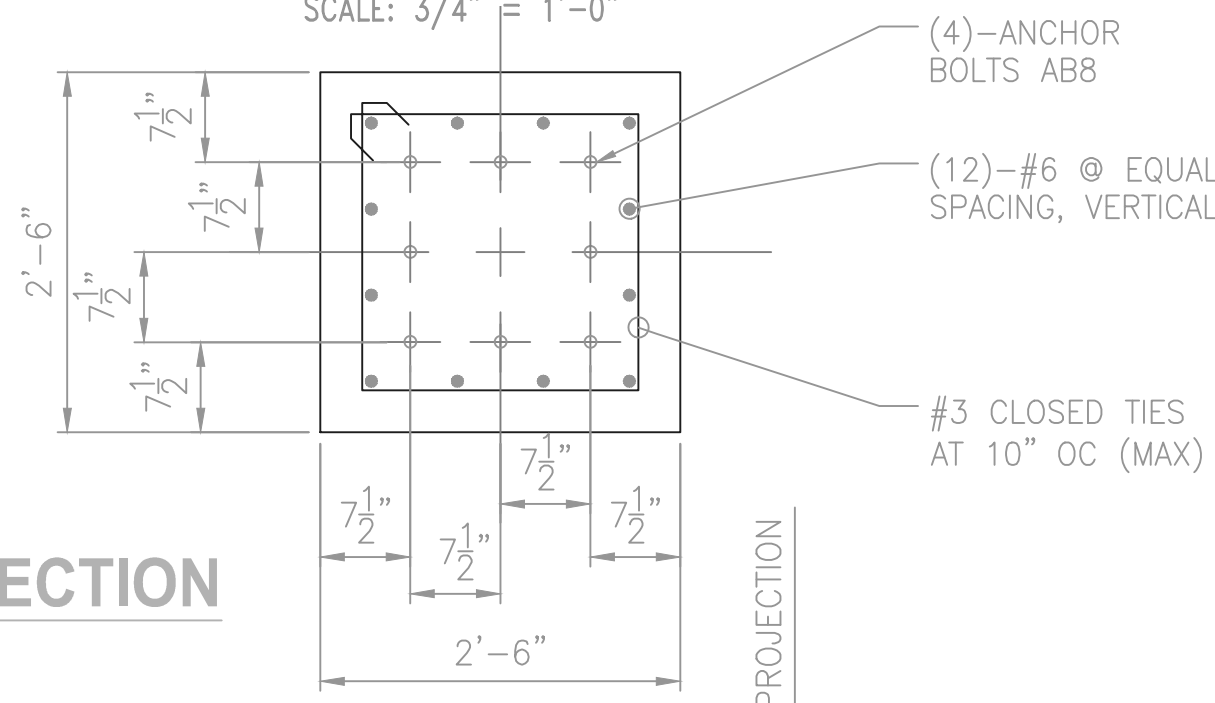
NOTE: ANCHOR BOLT SIZE AND DIMENSION ARE BASED ON ASSUMED STEEL MEMBER SIZES - SEE NOTE 40 SHEET S-01.

PIER SECTION



SCALE: 3/4" = 1'-0"

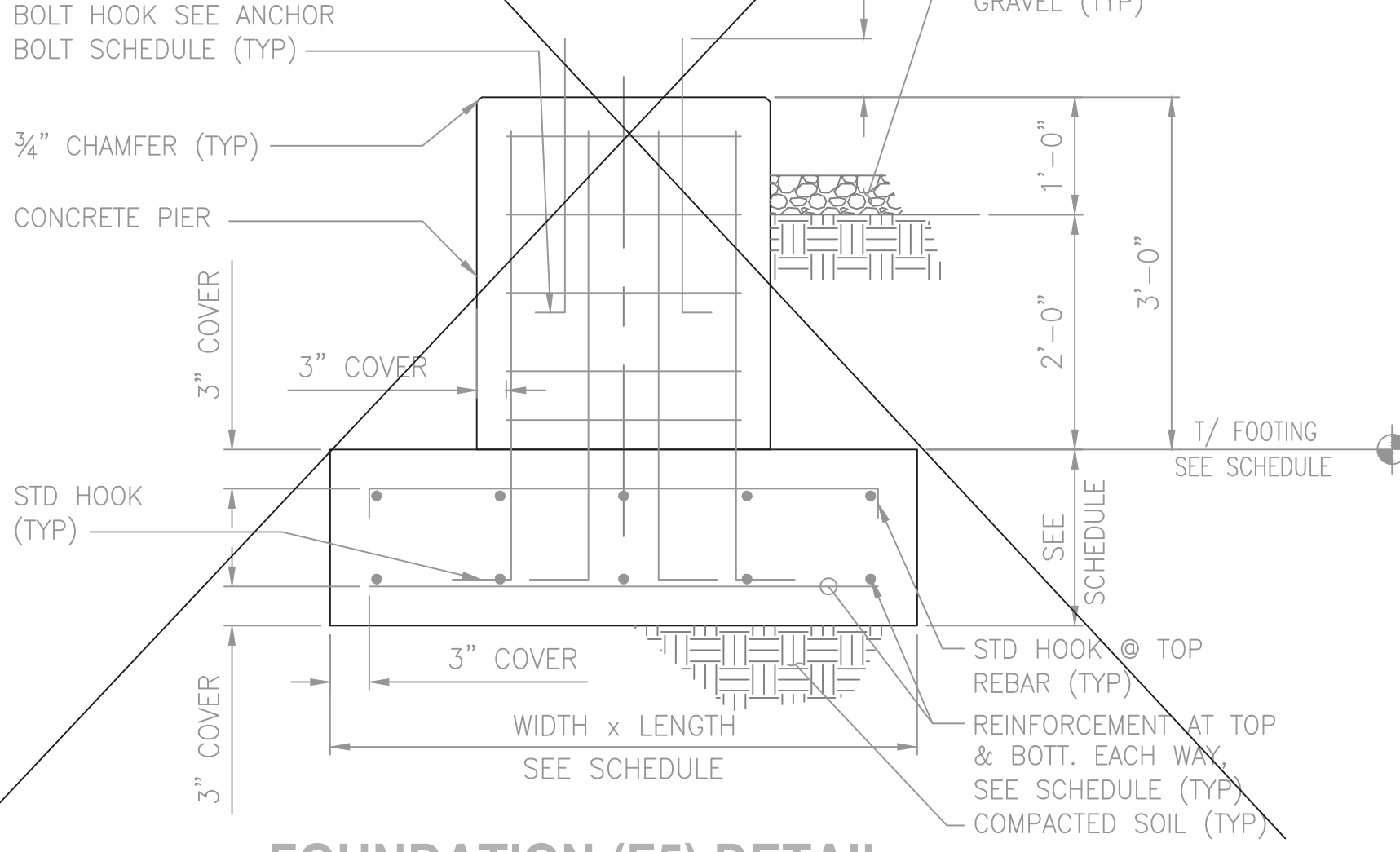
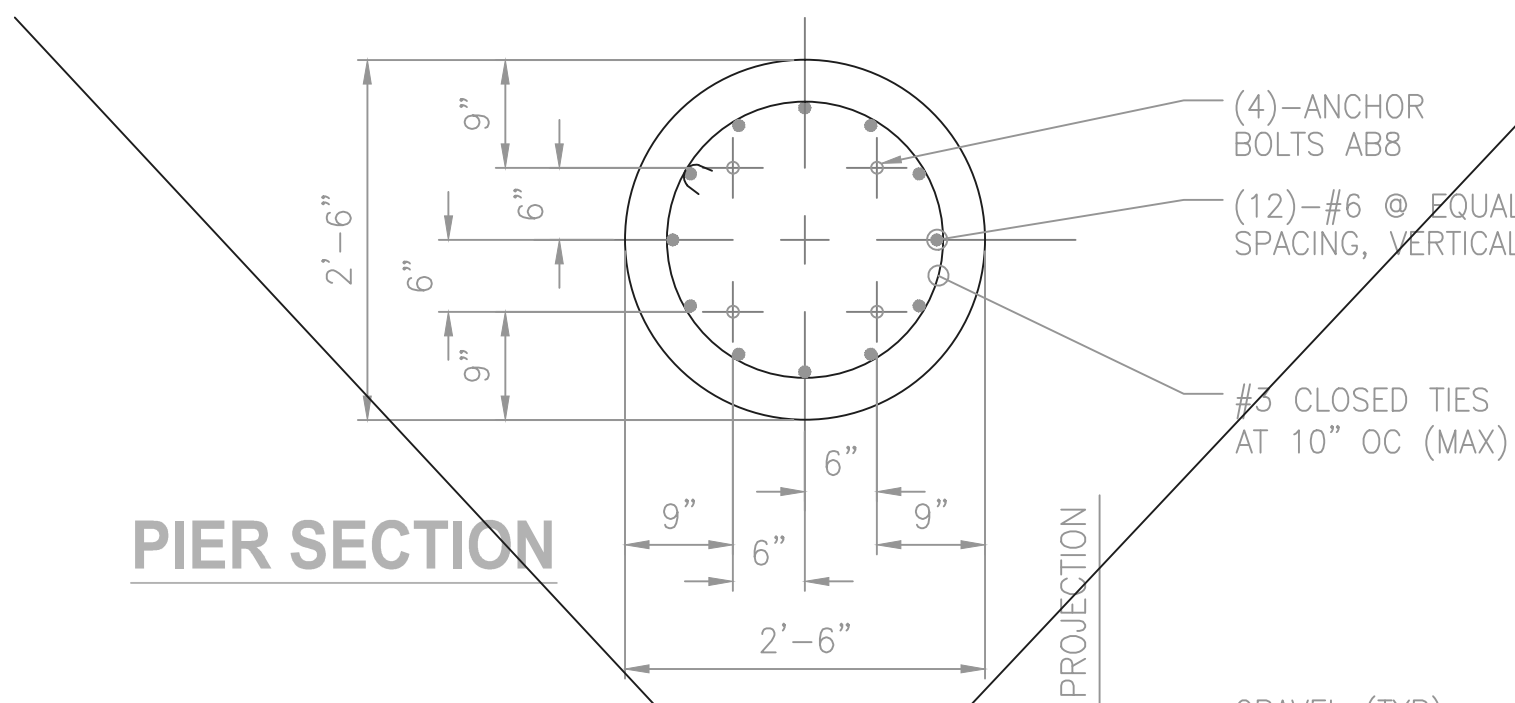
PIER SECTION



FOUNDATION (F3) DETAIL

SCALE: 3/4" = 1'-0"

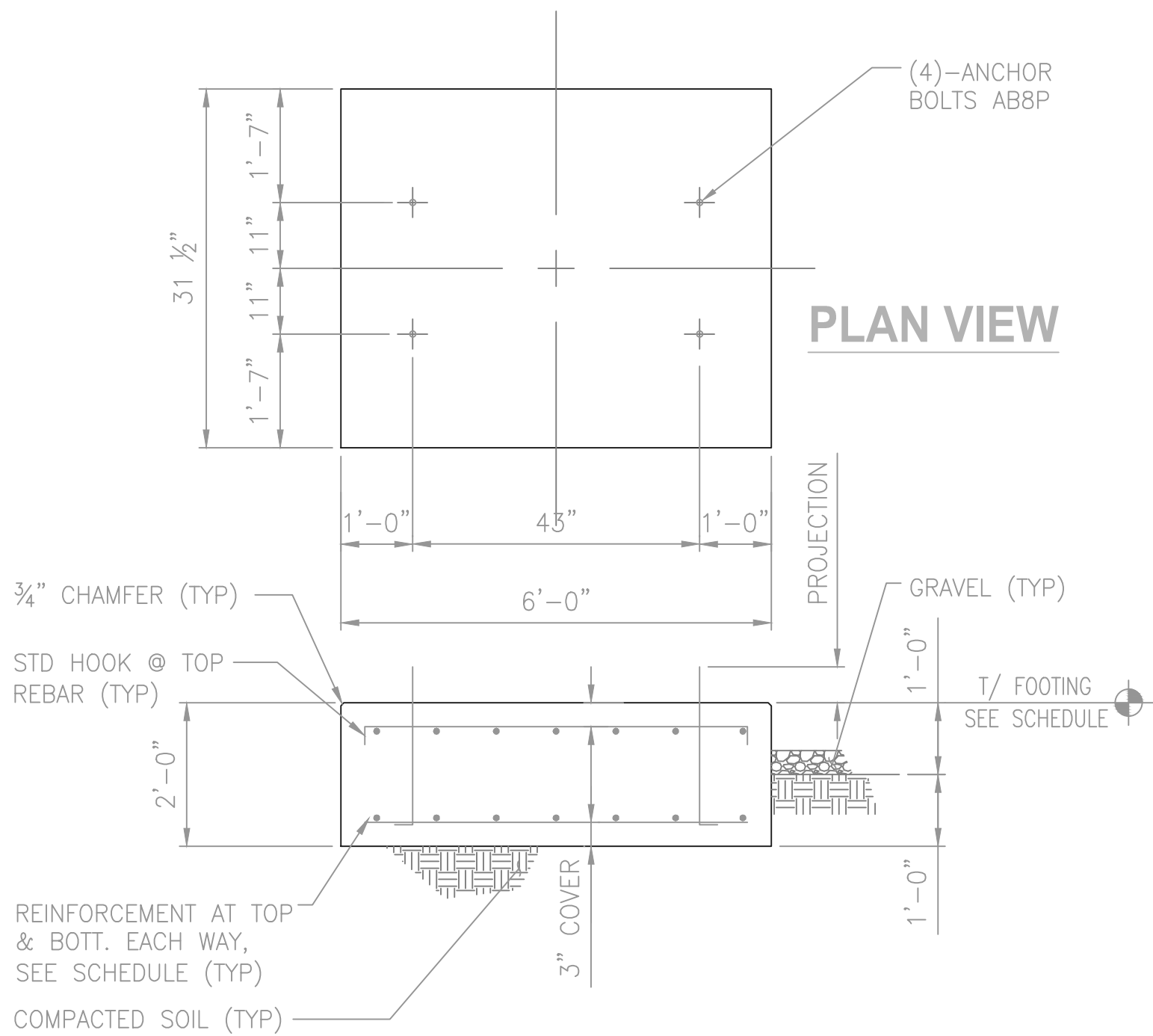
PIER SECTION



FOUNDATION (F5) DETAIL

SCALE: 3/4" = 1'-0"

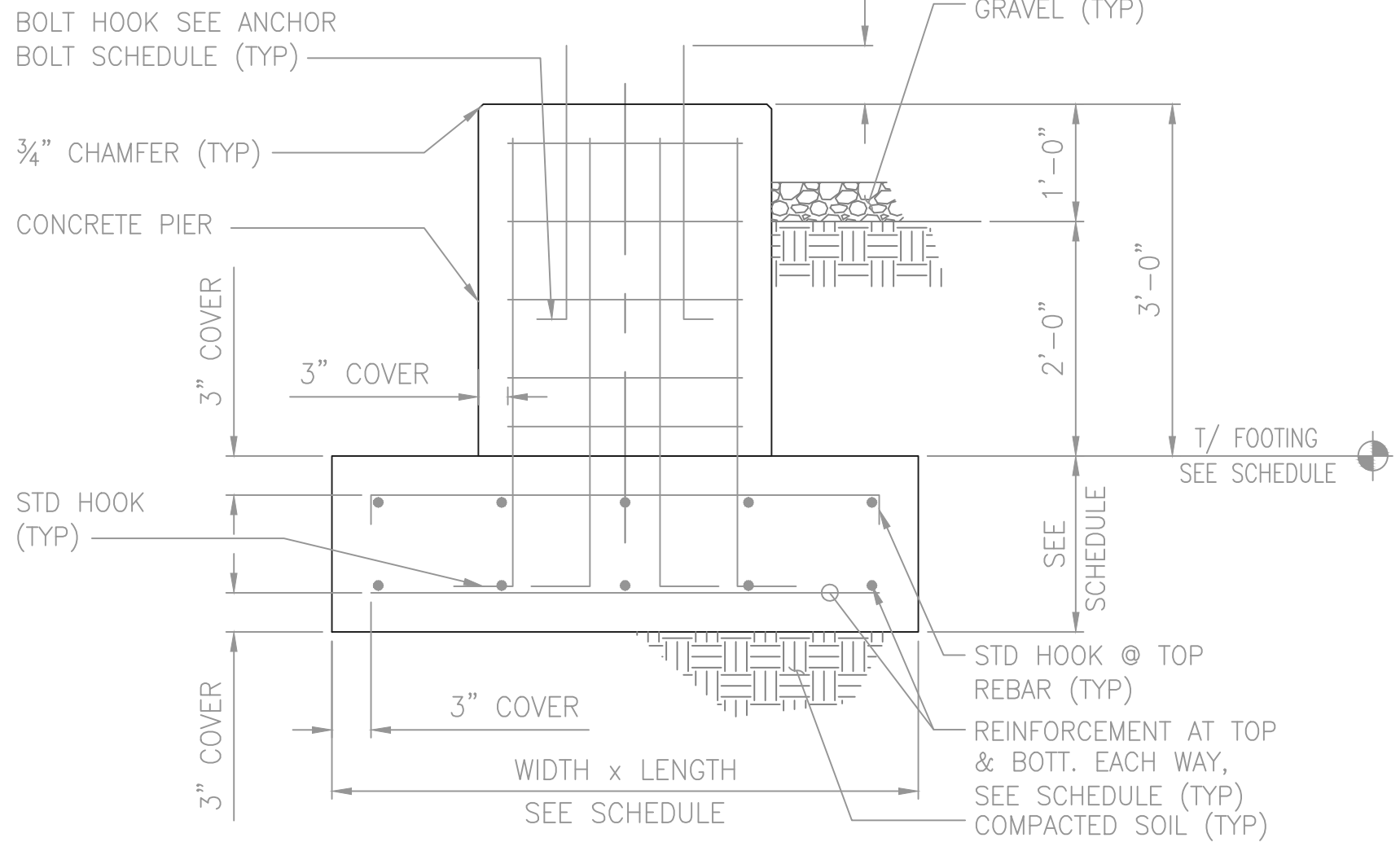
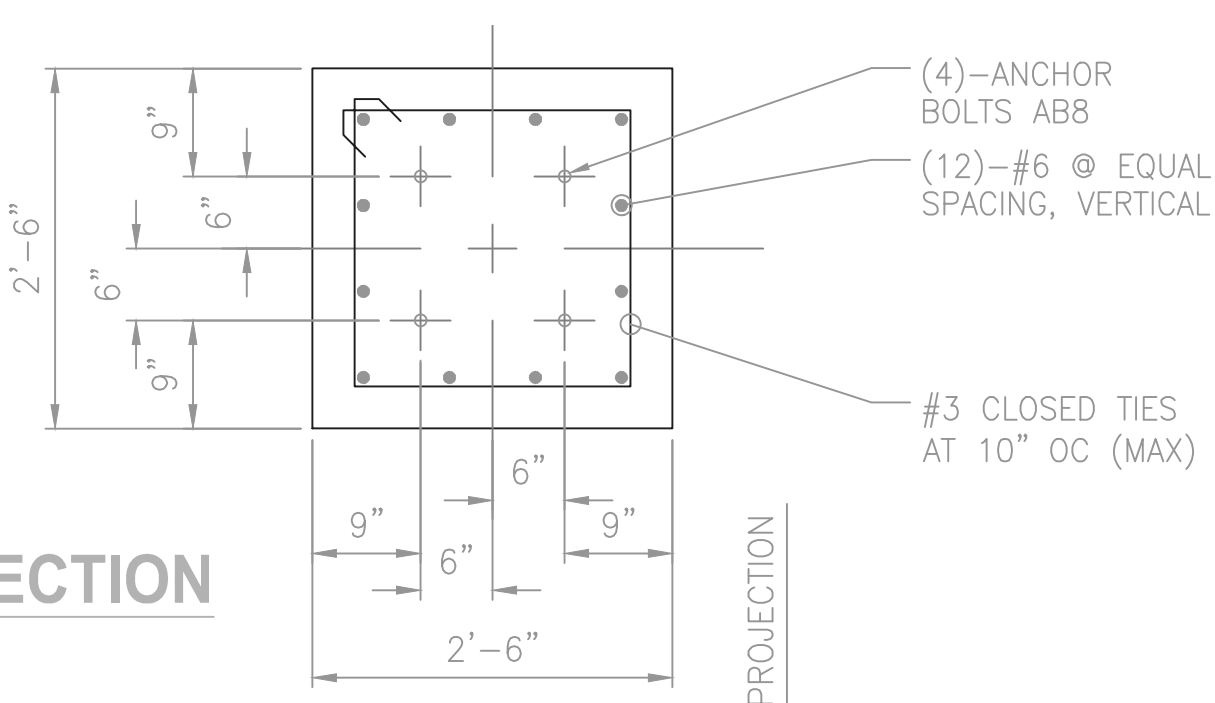
PLAN VIEW



PAD FOUNDATION (P56) DETAIL

SCALE: 1/2" = 1'-0"

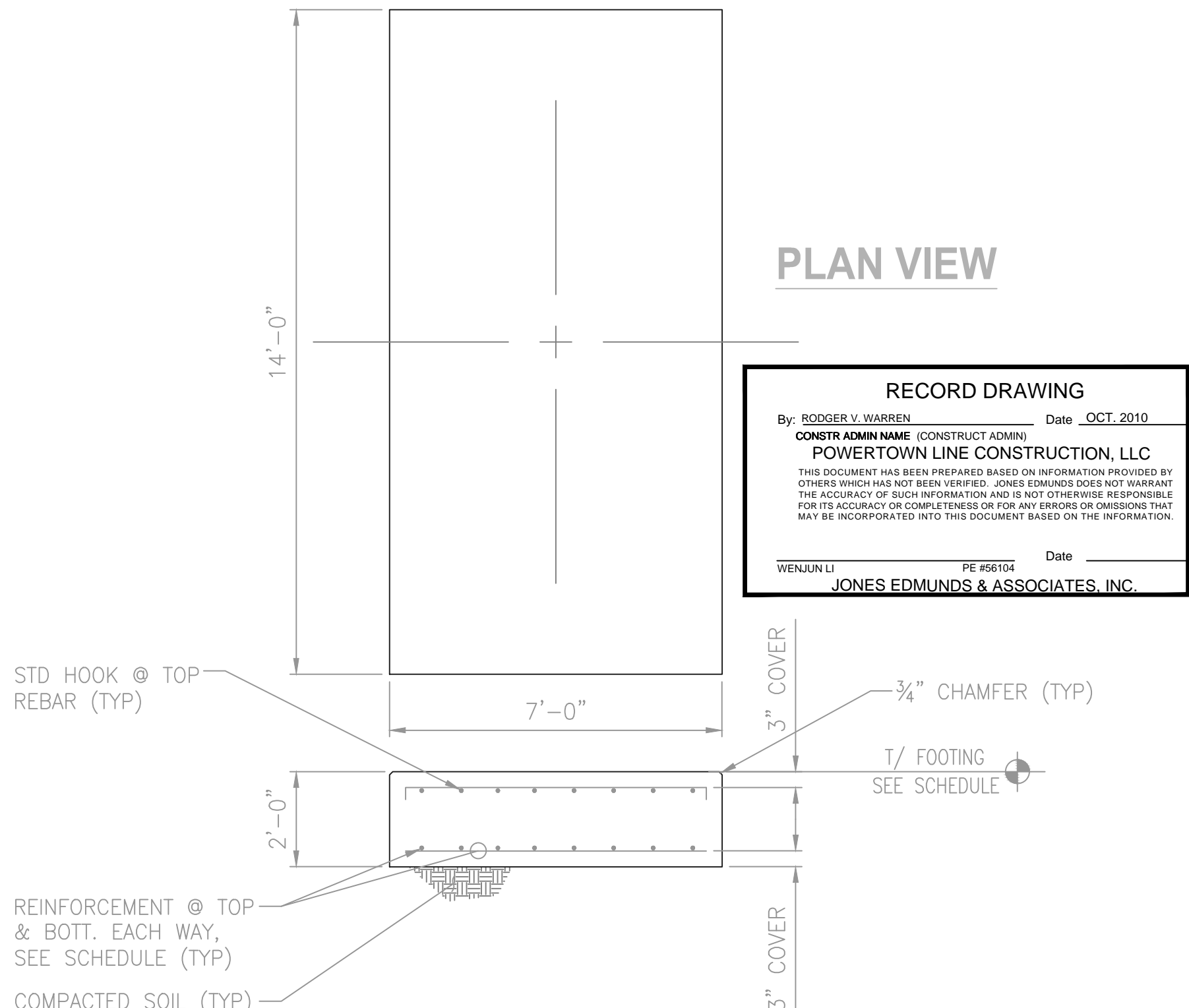
PIER SECTION



OPTIONAL FOUNDATION (F5) DETAIL

SCALE: 3/4" = 1'-0"

PLAN VIEW



PAD FOUNDATION (P14) DETAIL

SCALE: 3/8" = 1'-0"

RECORD DRAWING
By: RODGER V. WARREN Date: OCT. 2010
CONSTR ADMIN NAME (CONSTRUCT ADMIN):
POWERTOWN LINE CONSTRUCTION, LLC
THIS DOCUMENT HAS BEEN PREPARED BASED ON INFORMATION PROVIDED BY OTHERS WHICH HAS NOT BEEN VERIFIED. JONES EDMUNDS DOES NOT WARRANT THE ACCURACY OF SUCH INFORMATION AND IS NOT OTHERWISE RESPONSIBLE FOR ITS ACCURACY OR COMPLETENESS OR FOR ANY ERRORS OR OMISSIONS THAT MAY BE INCORPORATED INTO THIS DOCUMENT BASED ON THE INFORMATION.
WENJUN LI PE #56104 Date: _____
JONES EDMUNDS & ASSOCIATES, INC.

LAST SAVED: 5/14/2012 9:28 AM SHAERKAMP

LTR.	DATE	REVISIONS	BY	APPRD.	CHECKED

DESIGNED	RDH
DRAWN	RDH
CHECKED	WL



730 NE WALDO ROAD, GAINESVILLE, FLORIDA 32641 / (352) 377-5821
1100 CESERY BLVD - SECOND FLOOR, JACKSONVILLE, FLORIDA 32211 / (904) 744-5401

WAUCHULA SUBSTATION EXPANSION
WAUCHULA, FLORIDA

FOUNDATION DETAILS

CERTIFICATE OF AUTHORIZATION #1841	DATE	PROJECT NO.
APPROVED BY	AUG 2009	07602-032-01
WENJUN LI	SCALE	DWG. NO.
P.E. # 56104	SEE DETAIL	S-02