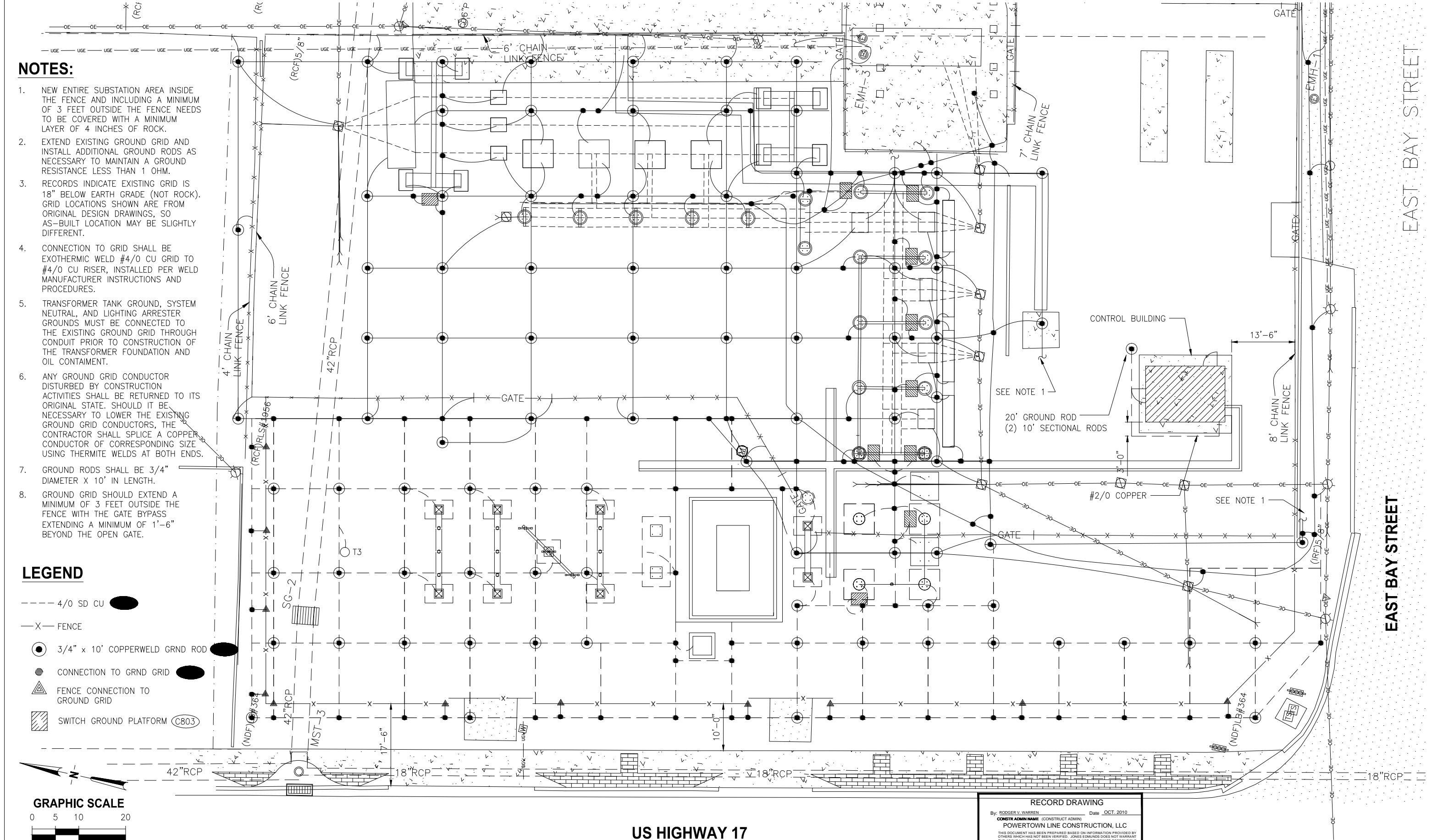
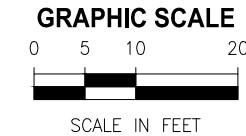


NOTES:

1. NEW ENTIRE SUBSTATION AREA INSIDE THE FENCE AND INCLUDING A MINIMUM OF 3 FEET OUTSIDE THE FENCE NEEDS TO BE COVERED WITH A MINIMUM LAYER OF 4 INCHES OF ROCK.
2. EXTEND EXISTING GROUND GRID AND INSTALL ADDITIONAL GROUND RODS AS NECESSARY TO MAINTAIN A GROUND RESISTANCE LESS THAN 1 OHM.
3. RECORDS INDICATE EXISTING GRID IS 18" BELOW EARTH GRADE (NOT ROCK). GRID LOCATIONS SHOWN ARE FROM ORIGINAL DESIGN DRAWINGS, SO AS-BUILT LOCATION MAY BE SLIGHTLY DIFFERENT.
4. CONNECTION TO GRID SHALL BE EXOTHERMIC WELD #4/0 CU GRID TO #4/0 CU RISER, INSTALLED PER WELD MANUFACTURER INSTRUCTIONS AND PROCEDURES.
5. TRANSFORMER TANK GROUND, SYSTEM NEUTRAL, AND LIGHTING ARRESTER GROUNDS MUST BE CONNECTED TO THE EXISTING GROUND GRID THROUGH CONDUIT PRIOR TO CONSTRUCTION OF THE TRANSFORMER FOUNDATION AND OIL CONTAINMENT.
6. ANY GROUND GRID CONDUCTOR DISTURBED BY CONSTRUCTION ACTIVITIES SHALL BE RETURNED TO ITS ORIGINAL STATE. SHOULD IT BE NECESSARY TO LOWER THE EXISTING GROUND GRID CONDUCTORS, THE CONTRACTOR SHALL SPlice A COPPER CONDUCTOR OF CORRESPONDING SIZE USING THERMITE WELDS AT BOTH ENDS.
7. GROUND RODS SHALL BE 3/4" DIAMETER X 10' IN LENGTH.
8. GROUND GRID SHOULD EXTEND A MINIMUM OF 3 FEET OUTSIDE THE FENCE WITH THE GATE BYPASS EXTENDING A MINIMUM OF 1'-6" BEYOND THE OPEN GATE.

LEGEND

- 4/0 SD CU
- X- FENCE
- 3/4" x 10' COPPERWELD GRND ROD
- CONNECTION TO GRND GRID
- ▲ FENCE CONNECTION TO GROUND GRID
- ▨ SWITCH GROUND PLATFORM (C803)



LTR.	DATE	REVISIONS	BY	APPRD.

DESIGNED	AO
DRAWN	AO
CHECKED	PW



730 NE WALDO ROAD, GAINESVILLE, FLORIDA 32641 / (352) 377-5821  
1100 CESERY BLVD - SECOND FLOOR, JACKSONVILLE, FLORIDA 32211 / (904) 744-5401

WAUCHULA SUBSTATION RESTORATION/EXPANSION  
WAUCHULA, FLORIDA

RECORD DRAWING

By: RODGER V. WARREN (CONSTRUCT ADMIN) Date: OCT. 2010

CONSTR ADMIN NAME: POWERTOWN LINE CONSTRUCTION, LLC

THIS DOCUMENT HAS BEEN PREPARED BASED ON INFORMATION PROVIDED BY OTHERS WHICH HAS NOT BEEN VERIFIED. JONES EDMUNDS DOES NOT WARRANT THE ACCURACY OF SUCH INFORMATION AND IS NOT OTHERWISE RESPONSIBLE FOR ITS ACCURACY OR COMPLETENESS OR FOR ANY ERRORS OR OMISSIONS THAT MAY BE INCORPORATED INTO THIS DOCUMENT BASED ON THE INFORMATION.

PHIL WEBER PE #36601 Date: JONES EDMUNDS & ASSOCIATES, INC.

GROUNDING PLAN

CERTIFICATE OF AUTHORIZATION #1841 APPROVED BY	DATE AUG 2009	PROJECT NO. 07602-032-01
	SCALE 1"=8'	DWG. NO. E-09
PHIL WEBER P.E. # 36601		