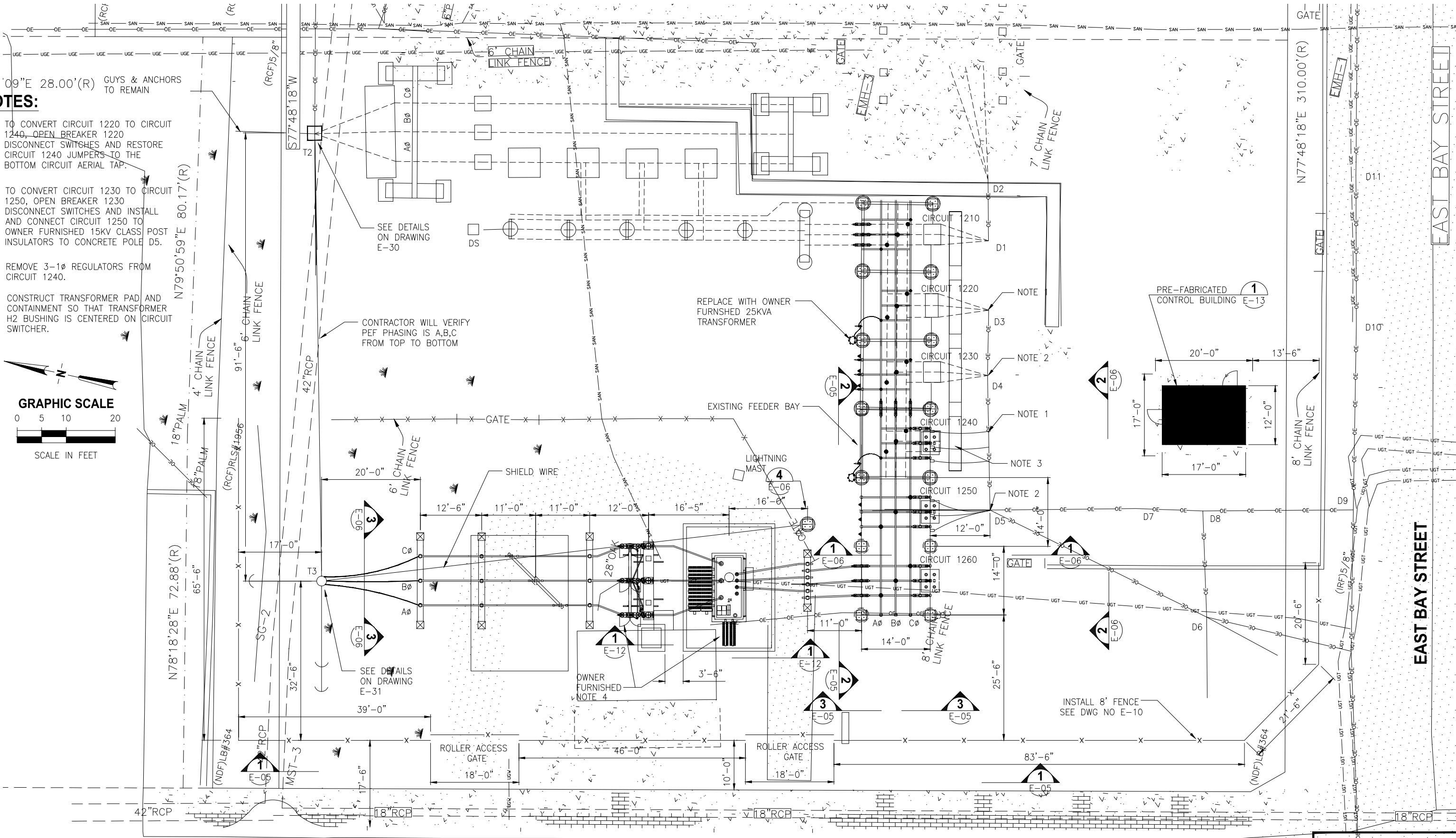
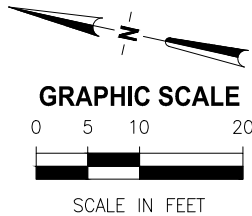


NOTES:

1. TO CONVERT CIRCUIT 1220 TO CIRCUIT 1240, OPEN BREAKER 1220 DISCONNECT SWITCHES AND RESTORE CIRCUIT 1240 JUMPERS TO THE BOTTOM CIRCUIT AERIAL TAP.
2. TO CONVERT CIRCUIT 1230 TO CIRCUIT 1250, OPEN BREAKER 1230 DISCONNECT SWITCHES AND INSTALL AND CONNECT CIRCUIT 1250 TO OWNER FURNISHED 15KV CLASS POST INSULATORS TO CONCRETE POLE D5.
3. REMOVE 3-1Ø REGULATORS FROM CIRCUIT 1240.
4. CONSTRUCT TRANSFORMER PAD AND CONTAINMENT SO THAT TRANSFORMER H2 BUSHING IS CENTERED ON CIRCUIT SWITCHER.



N12°13'42"W 13.50'(R)

S12°14'02"E 205.00'(R)

US HIGHWAY 17

RECORD DRAWING

By: RODGER V. WARREN Date: OCT. 2010

CONSTR. ADMIN. NAME (CONSTRUCT. ADMIN.)

POWERTOWN LINE CONSTRUCTION, LLC

THIS DOCUMENT HAS BEEN PREPARED BASED ON INFORMATION PROVIDED BY OTHERS WHO HAS NOT BEEN VERIFIED. JONES EDMUNDS DOES NOT WARRANT THE ACCURACY OF SUCH INFORMATION AND IS NOT OTHERWISE RESPONSIBLE FOR ITS ACCURACY OR COMPLETENESS OR FOR ANY ERRORS OR OMISSIONS THAT MAY BE INCORPORATED INTO THIS DOCUMENT BASED ON THE INFORMATION.

Date

PHIL WEBER PE #39801 JONES EDMUNDS & ASSOCIATES, INC.

DESIGNED	AO
DRAWN	AO



WAUCHULA SUBSTATION RESTORATION/EXPANSION
WAUCHULA, FLORIDA

ELECTRICAL PLAN

CERTIFICATE OF AUTHORIZATION #1841	DATE	PROJECT NO.
APPROVED BY	AUG 2009	07602-032-01
PHIL WFRFR	SCALE	DWG. NO.